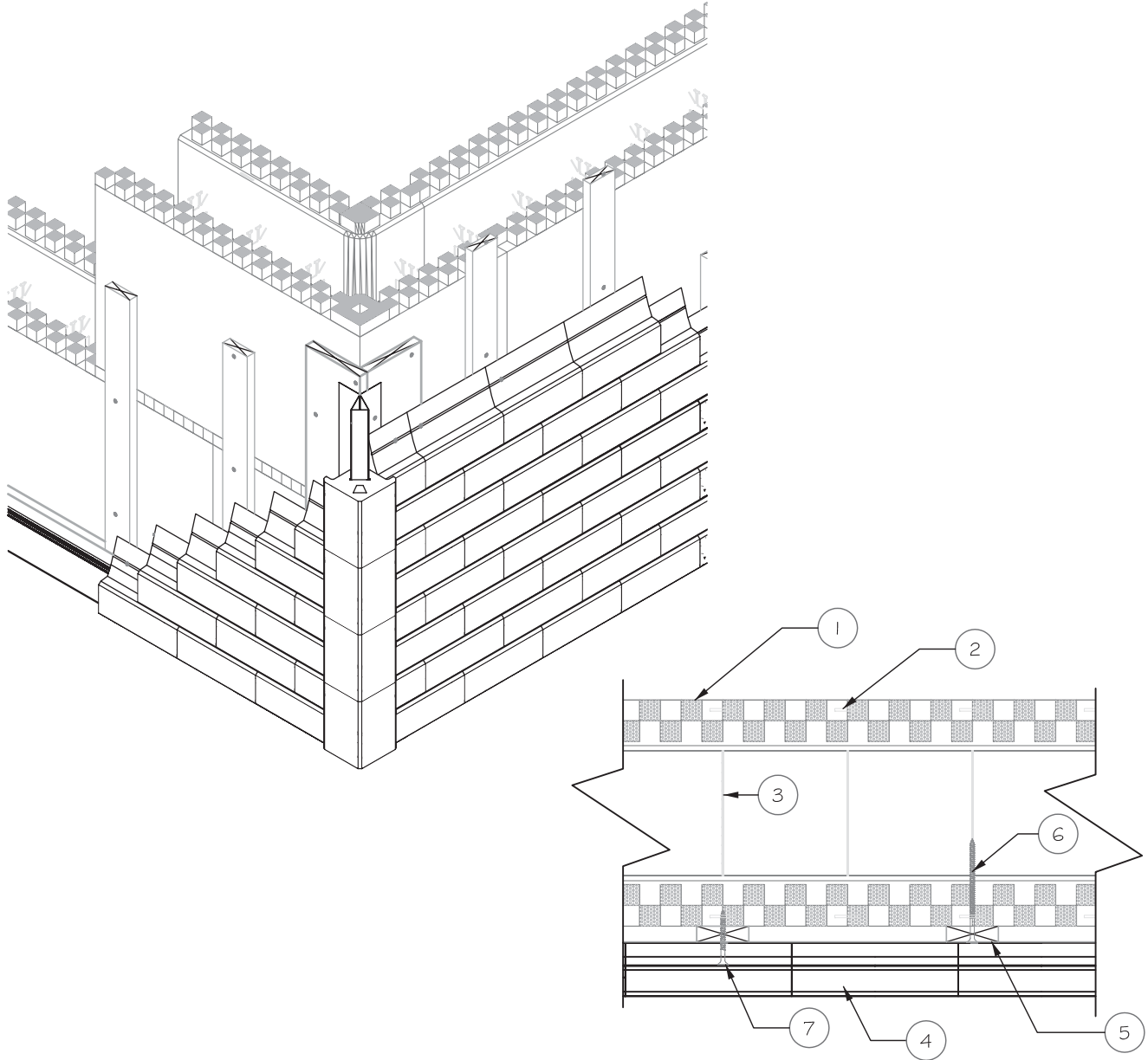


4.6- Installation on Insulated Concrete Forms (ICF)

1- Typical ICF installation



**LEGEND:**

- 1- ICF
- 2- ICF plastic tie flange
- 3- ICF plastic tie web
- 4- Starter strip fastened with 1/4" x 5" (6mm x 127mm) concrete screws at 10" (254mm) o.c. over 1" x 6" baseboard fastened top and bottom at 8" o.c. with #10 corrosion resistant screws (min. 1 1/4" (32mm) penetration into structure).
- 5- 1" x 3" (19mm x 64mm) wood furring strip at 16" (406mm) o.c. fastened at 10" (254mm) with 1/4" x 5" (6mm x 127mm) corrosion resistant concrete screws.
- 6- Novabrik fastened with #10 x 2 1/2" (64mm) wood screws at every fourth course at each furring strip.

