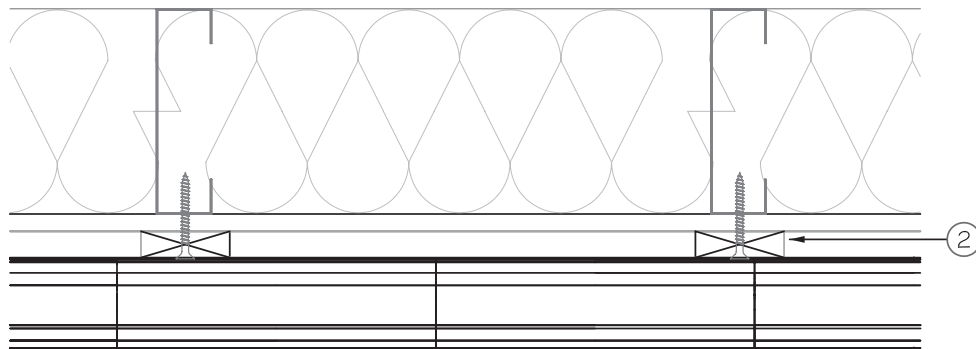
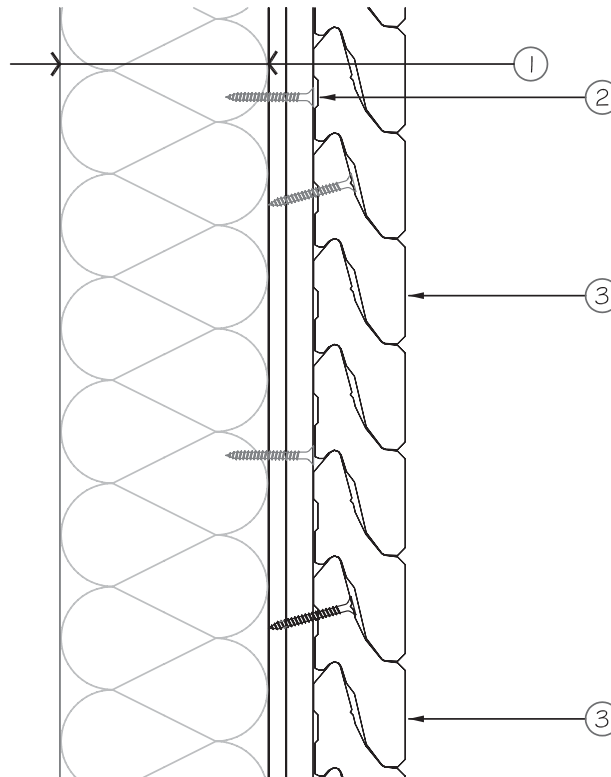


4.4- Installation on Steel structure

1- Typical steel stud section



**LEGEND:**

- 1- Steel stud wall (by others).
- 2- 1" x 3" (19mm x 64mm) vertical wood furring strips fastened at 10" o.c. with tek #12-24 x 2½" (64mm) (wood to metal screws).
- 3- Novabrik fastened every fourth course at each furring with one #12-24 x 2½" (64mm) (wood to metal screws).

