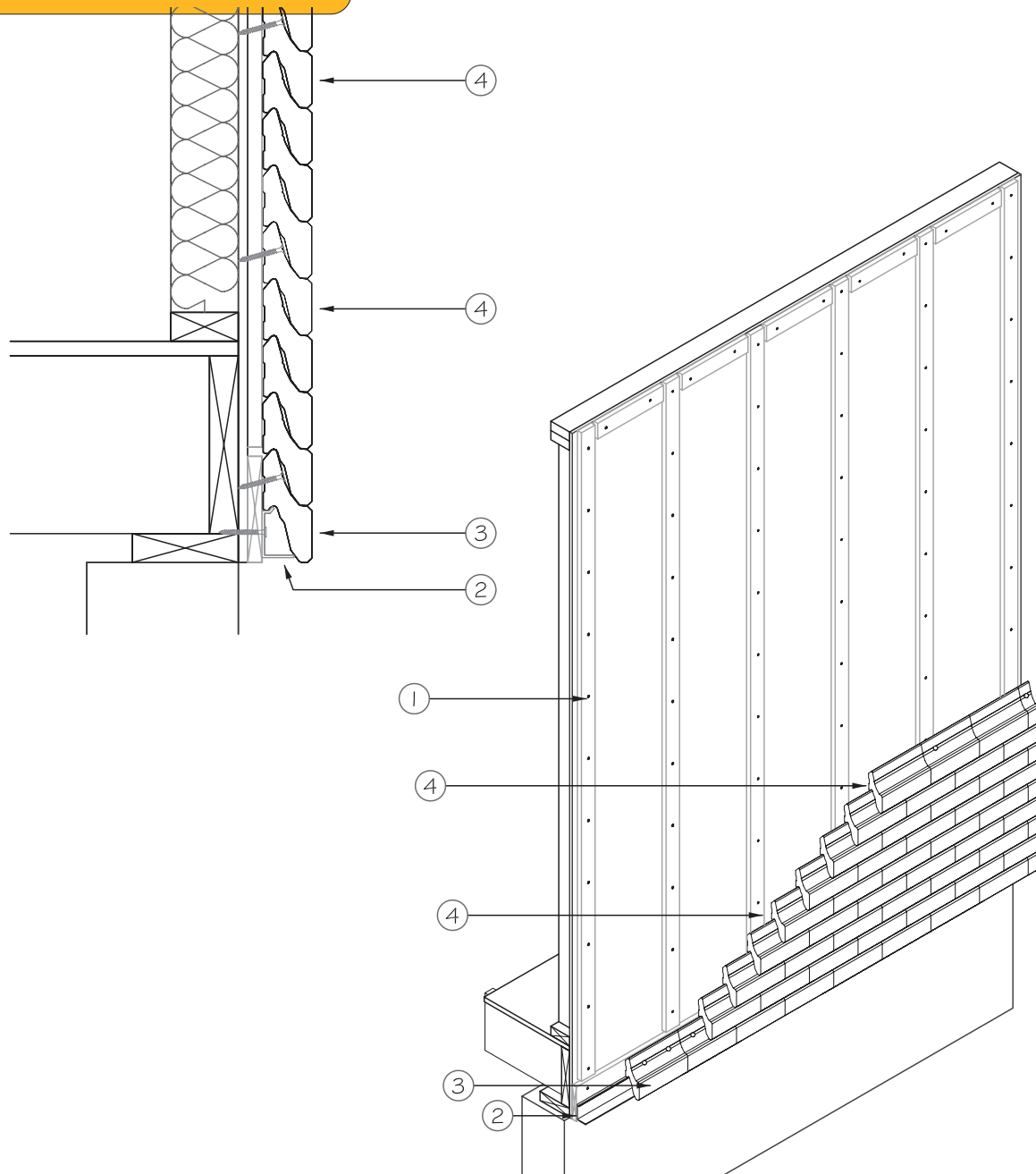


4.2 - Novabrik Installation

6- Novabrik on wood structure



**LEGEND:**

- 1- 1" x 3" (19mm x 64mm) vertical furring strips fastened at 10" (254mm) o.c. with #10 corrosion resistant wood screws (1¼" (32mm) min. penetration into stud). Make sure to install a furring strip at each stud (16" or 24" (407mm or 607mm)o.c.)
- 2- Starter strip screwed with #10 corrosion resistant screws over 1" x 6" (19mm x 140mm) baseboard fastened top and bottom at 8" o.c. with #10 corrosion resistant screws (min. 1¼" (32mm) penetration into stud).
- 3- Fasten the first row with two #10 x 2½" (64mm) corrosion resistant screws per Novabrik
- 4- Fasten every fourth row with two #10 x 2½" (64mm) corrosion resistant screws at every Novabrik.

