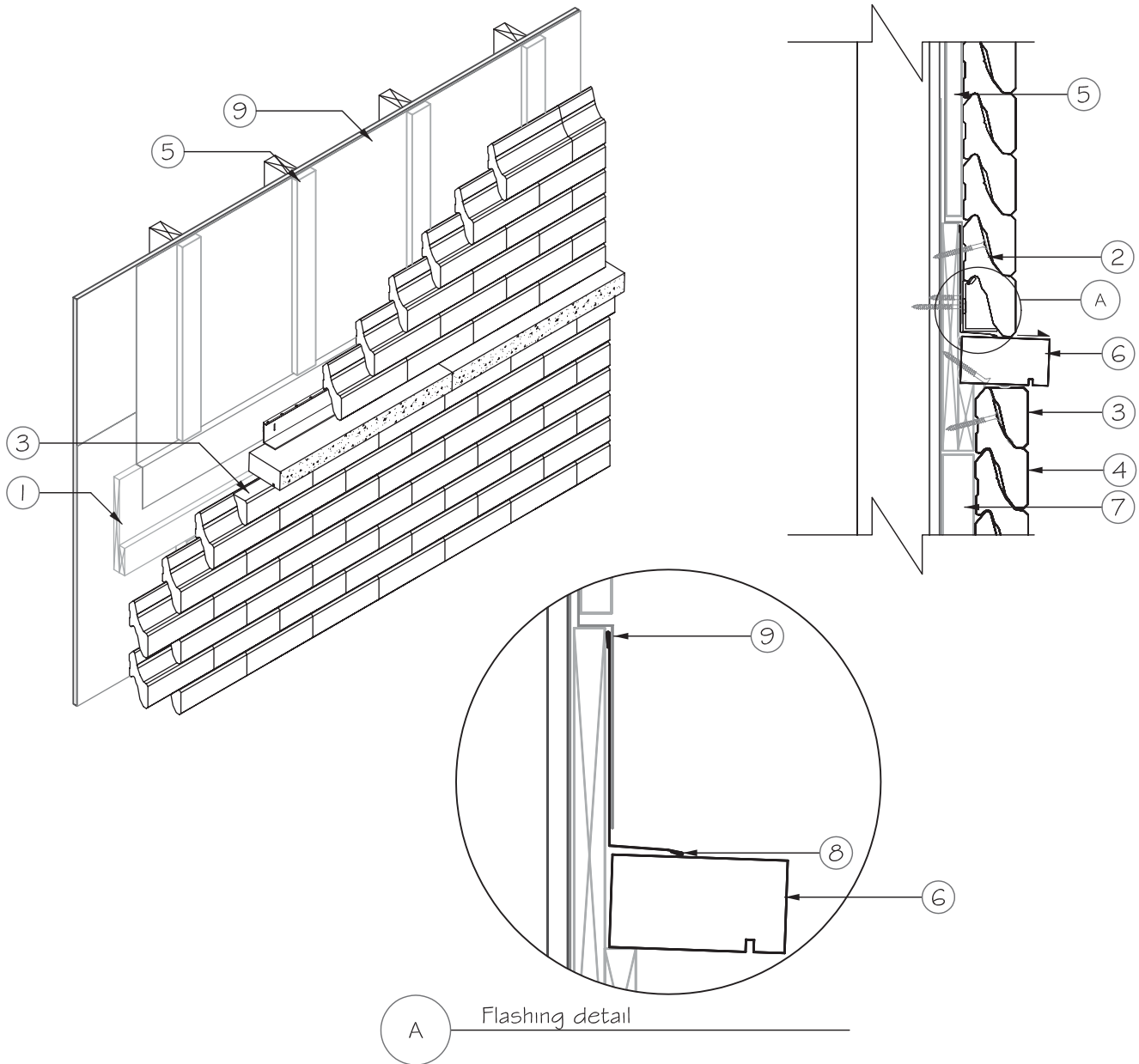


4.2- Novabrik Installation

10- Architectural wall details



A Flashing detail

LEGEND:

- 1- 2 layers of 3/4" (19mm) plywood, first one is 11" (279mm) high, covered with housewrap and, the second one is 3 1/2" (89mm) high.
- 2- Novabrik on strater strip, fasten each brick.
- 3- Filler piece secured in place with construction adhesive.
- 4- Novabrik fasten with min. one screw per brik.
- 5- 1" x 3" (19mm x 64mm) furring strips.
- 6- Sill secured in place with construction adhesive and screwed either on the sides or underneath of the sill.
- 8- Flashing
- 9- Housewrap

